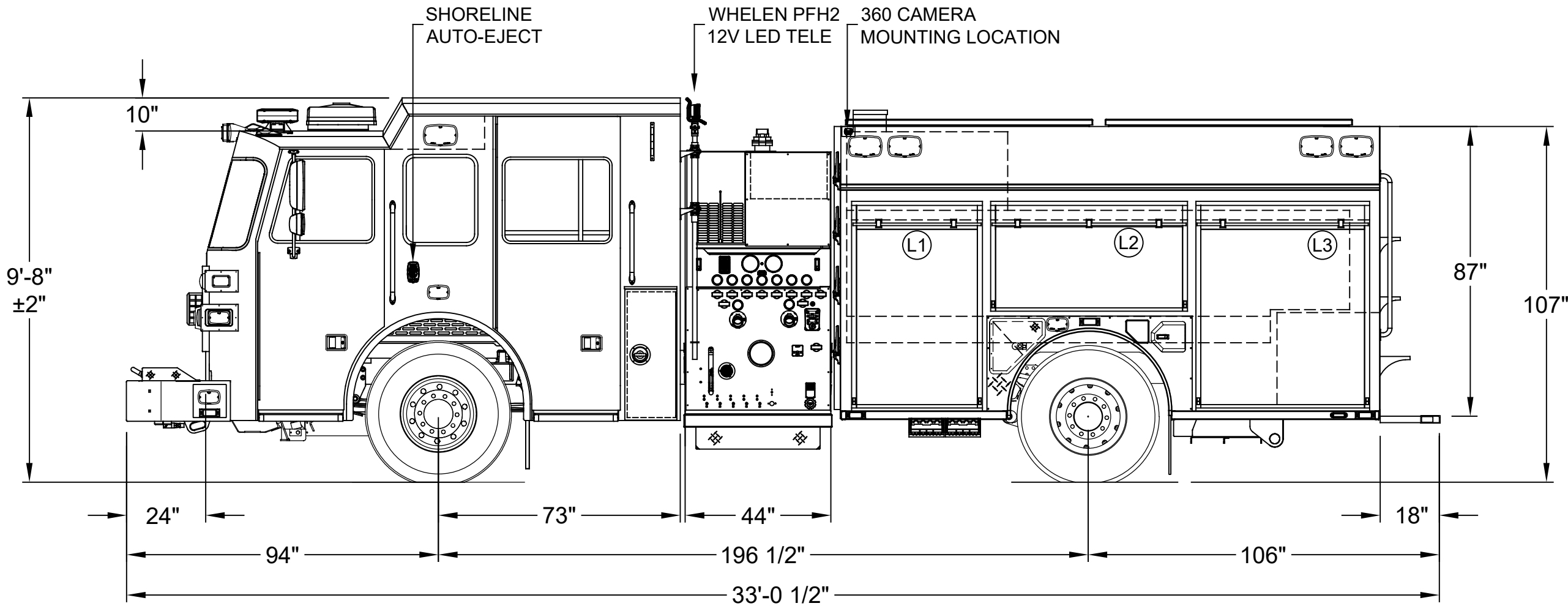



Technical drawing of the interior layout of the EMT-1000. The drawing shows the arrangement of equipment within the vehicle's compartments. Key features include:

- Dimensions:** A 30" dimension is shown for the width of the equipment area, and a 110" dimension is shown for the length of the storage compartments.
- Equipment:** Various pieces of equipment are labeled with numbers 1 through 4, and letters O, D, and H. These include storage bins, toolboxes, and specialized equipment.
- Storage Compartments:** Two large storage compartments are shown, labeled "30 GALLONS FOAM" and "750 GALLONS WATER".
- Accessories:** The drawing includes details of drawers, doors, and internal shelving.



DIMENSIONS SHOWN ON THIS DRAWING ARE APPROXIMATE AND ARE SUBJECT TO MINOR DEVIATIONS DURING CONSTRUCTION.	CUSTOMER APPROVAL		G	MINOR CLAR NOTE ADDITIONS FROM FINAL	KG	12/21/21	DRAWN BY: K.GOON	
			F	UPDATED THE SHOP ORDER FOR THE EXTERIOR CAB COMPARTMENT DOORS REVERSED HINGED	KG	12/16/21		
IN THE EVENT OF A DISCREPANCY BETWEEN THE SUTPHEN SPECIFICATIONS AND DRAWING, THE SUTPHEN SPECIFICATIONS SHALL PREVAIL.	NAME: _____	E	DELETED ALL SHELVING & TURTLE TILE	KG	12/09/21	DATE: 03/03/21		
	TITLE: _____	D	ADDED ENG NOTE FOR THE CHANGE IN THE TURTLE TILE PATTERN	KG	10/19/21	MFG. FACILITY: DUBLIN		
DRAWING IS FOR REFERENCE ONLY. SOME ITEMS PROPOSED MAY NOT BE SHOWN OR NOTED.	DATE: _____	REV.	DESCRIPTION	BY	DATE	DWG. NO.:		
		THIS PRINT IS PROVIDED ON A RESTRICTED BASIS AND IS NOT TO BE USED IN ANY WAY DETRIMENTAL TO THE INTEREST OF SUTPHEN CORPORATION.				CUSTOM PUMPER - S9 HS-7091		