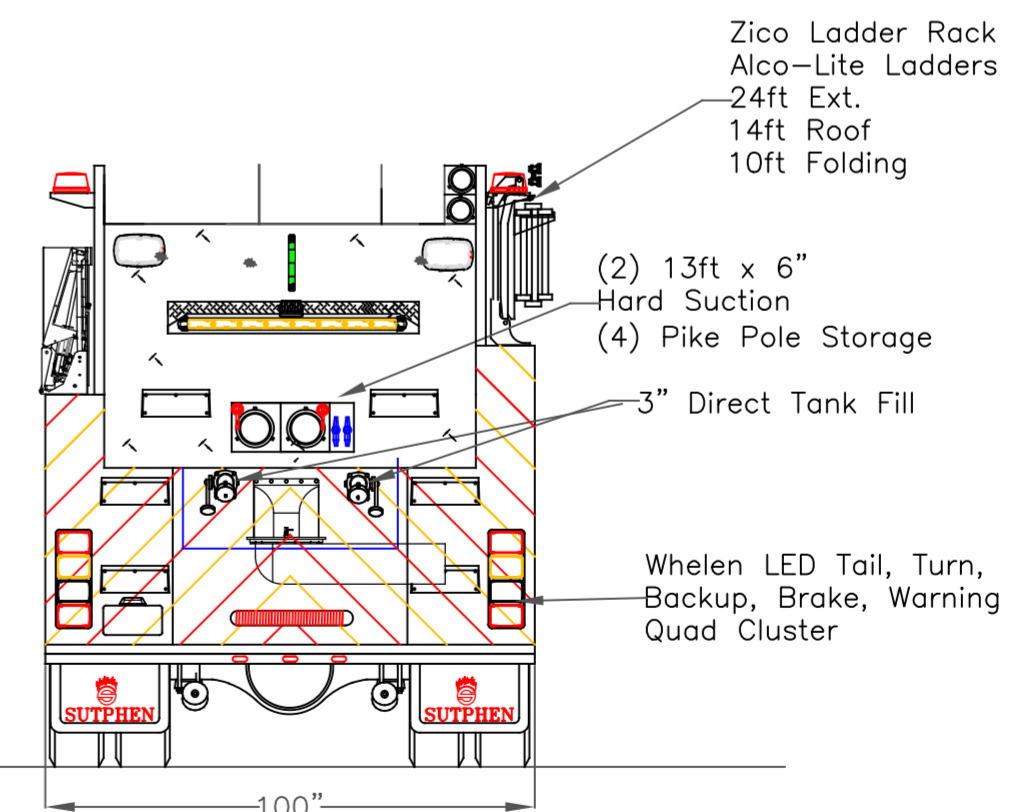
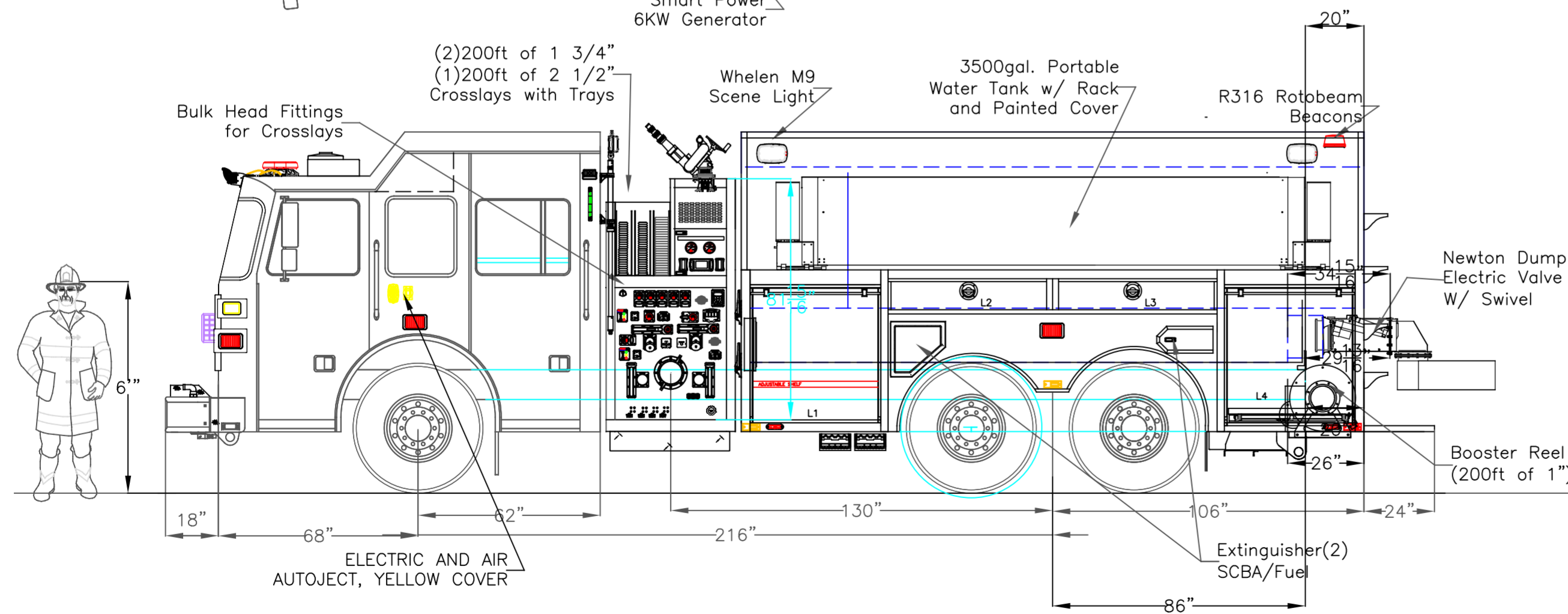


| Left Side Compartmentation | | | | |
|--|---------|--------------------|-------------------------|--------------|
| Compt | Doors | Opening Dimensions | Inside Dimensions WxHxD | Volume |
| L1 | Roll Up | 43x41 | 49x51x10.25/24.25 | 29.7 CU FT |
| L2 | Slam | 49x12 | 56x15x10.25 | 5 CU FT |
| L3 | Slam | 49x12 | 56x15x10.25 | 5 CU FT |
| L4 | Roll Up | 43x41 | 48.75x51x10.25/24.25 | 29.7 CU FT |
| Right Side Compartmentation | | | | |
| Compt | Doors | Opening Dimensions | Inside Dimensions WxHxD | Volume |
| R1 | Roll Up | 43x41 | 49x60x10.25/24.25 | 34.7 CU FT |
| R2 | Slam | 49x12 | 56x22.5x10.25 | 8 CU FT |
| R3 | Slam | 49x12 | 56x22.5x10.25 | 8 CU FT |
| R4 | Roll Up | 43x41 | 48.75x60x10.25/24.25 | 34.7 CU FT |
| HALE QMAX 1500 SINGLE STAGE 3000 GALLONS OF WATER HALE SMART FOAM 2.1GPM 30 GALLONS OF FOAM | | | | Total Volume |
| | | | | 154.8 CU Ft |



| | | | | | | | | |
|---|-------------------|--|--------|------------------------------------|-----|----------|---|---|
| DIMENSIONS SHOWN ON THIS DRAWING ARE APPROXIMATE AND ARE SUBJECT TO MINOR DEVIATIONS DURING CONSTRUCTION. IN THE EVENT OF A DISCREPANCY BETWEEN THE SUTPHEN SPECIFICATIONS AND DRAWING, THE SUTPHEN SPECIFICATIONS SHALL PREVAIL. DRAWING IS FOR REFERENCE ONLY. SOME ITEMS PROPOSED MAY NOT BE SHOWN OR NOTED. | CUSTOMER APPROVAL | | E | CHANGE ORDER E-ADDED ANTENNAS | SED | 06/09/20 | DRAWN BY: S.DORFMAN | SUTPHEN EAST 55 INNOVATION DRIVE LAKE ARIEL, PA 1-844-776-2889 COMMUNITY FIRE CO. LANDINGVILLE, PA ALUMINUM DRYSIDE TANKER HS 6620 |
| | NAME: | | D | CHANGE ORDER D- AIRHORNS ARE ROUND | SED | 04/07/20 | | |
| | TITLE: | | B | ADD MIV TO DRIVER SIDE | SED | 01/20/20 | MFG. FACILITY: SUTPHEN EAST LAKE ARIEL, PA | |
| | DATE: | | REV. A | CHANGES FROM PRE-CON | SED | 10/8/19 | BY DATE | |
| | | | REV. | DESCRIPTION | BY | DATE | DWG. NO.: | |
| THIS PRINT IS PROVIDED ON A RESTRICTED BASIS AND IS NOT TO BE USED IN ANY WAY DETRIMENTAL TO THE INTEREST OF SUTPHEN CORPORATION. | | | | | | | | |