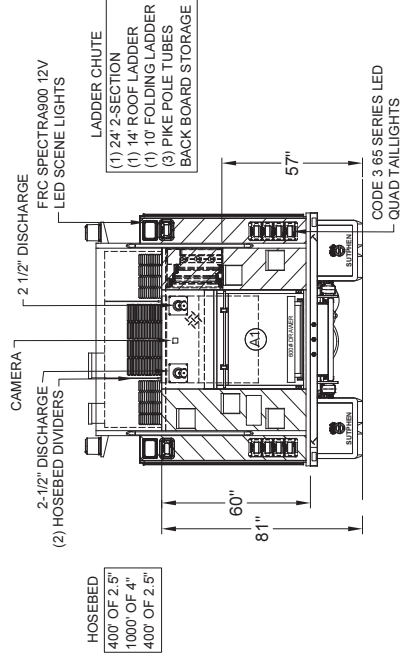
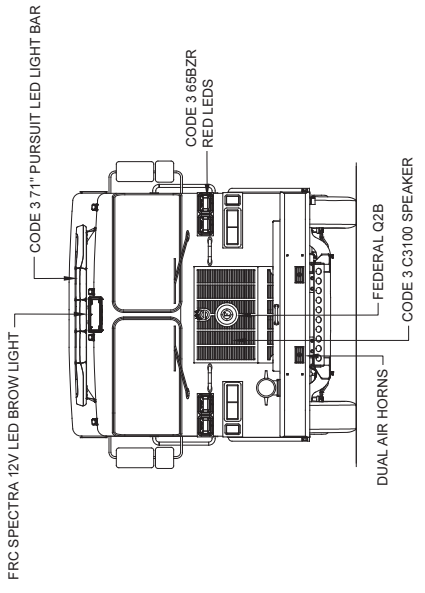


PAIN  
TWO-TONE  
BLACK OVER RED  
ON CAB &  
BODY



LEFT SIDE COMPARTMENTATION			
COMP	DOORS	OPENING DIMENSIONS	VOLUME
L1	ROLL-UP	37" W X 56 7/8" H	40 CU. FT.
L2	ROLL-UP	57" W X 27 5/8" H	30 CU. FT.
L3	ROLL-UP	59" W X 56 7/8" H	52 CU. FT.
RIGHT SIDE COMPARTMENTATION			
COMP	DOORS	OPENING DIMENSIONS	VOLUME
R1	ROLL-UP	43" W X 65 7/8" H X 27 1/4" D (10 1/2" CLIPPER)	26 CU. FT.
R2	ROLL-UP	57" W X 27 5/8" H	13 CU. FT.
R3	ROLL-UP	56" W X 56 7/8" H	34 CU. FT.
REAR STEP COMPARTMENTS			
COMP	DOORS	OPENING DIMENSIONS	VOLUME
A1	ROLL-UP	37 1/2" W X 31" H	27 CU. FT.
			TOTAL: 222 CU. FT.

**SUTPHEN**  
CITY OF GROSSE POINTE FIRE DEPARTMENT  
GROSSE POINTE, MI  
CUSTOM PUMPER - S2 BODY

DATE: 02/19/20  
DATE: 11/09/19  
DATE: 04/15/19  
DATE: 03/25/19

---

THIS PRINT IS PROVIDED ON A RESTRICTED BASIS AND IS NOT TO BE USED IN ANY WAY DETRIMENTAL TO THE INTEREST OF SUTPHEN CORPORATION.

REV	DESCRIPTION	BY	DATE
C	COMPONENT REPORT UPDATED	MJC	02/19/20
B	COMPONENT REPORT UPDATED	MJC	11/09/19
A	AFTER PRE-CON	MJC	04/15/19
	INITIAL	MJC	03/25/19

---

**CUSTOMER APPROVAL**

NAME: \_\_\_\_\_  
TITLE: \_\_\_\_\_  
DATE: \_\_\_\_\_

DIMENSIONS SHOWN ON THIS DRAWING ARE APPROXIMATE AND ARE SUBJECT TO MINOR DEVIATIONS DURING CONSTRUCTION.  
IN THE EVENT OF A DISCREPANCY BETWEEN THE SUTPHEN SPECIFICATIONS AND DRAWING, THE SUTPHEN SPECIFICATIONS SHALL PREVAIL.  
DRAWING IS FOR REFERENCE ONLY. SOME ITEMS PROPOSED MAY NOT BE SHOWN OR NOTED.