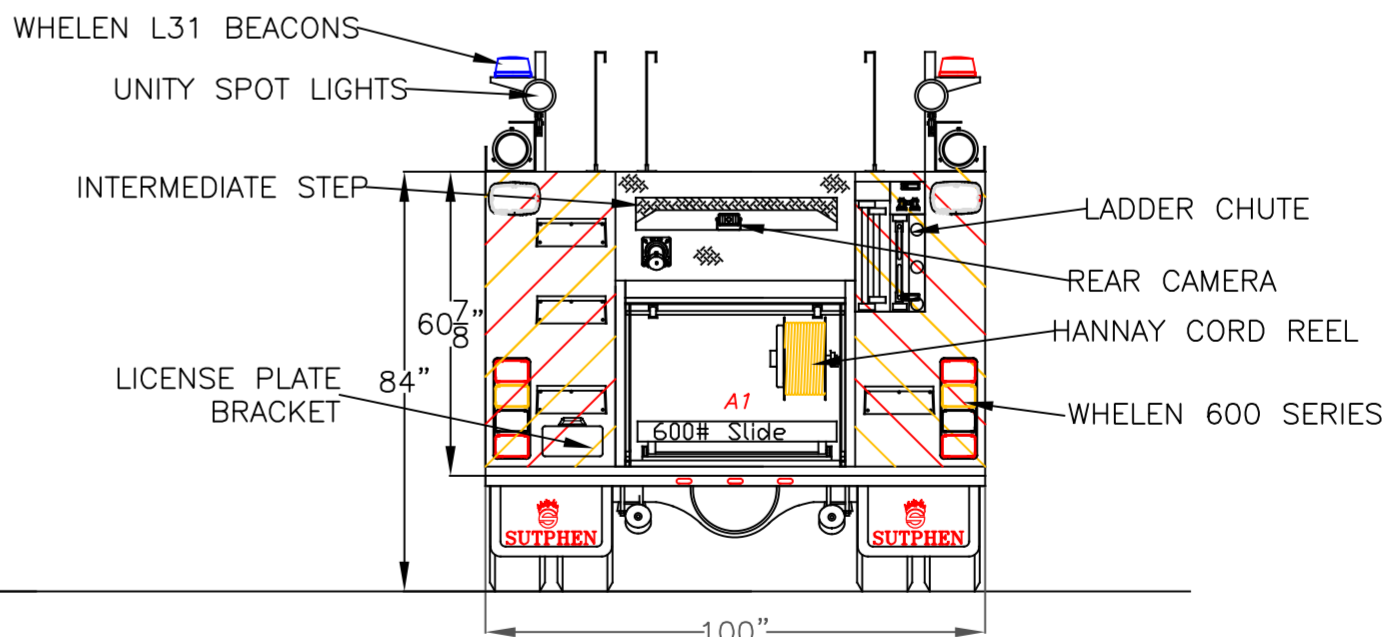
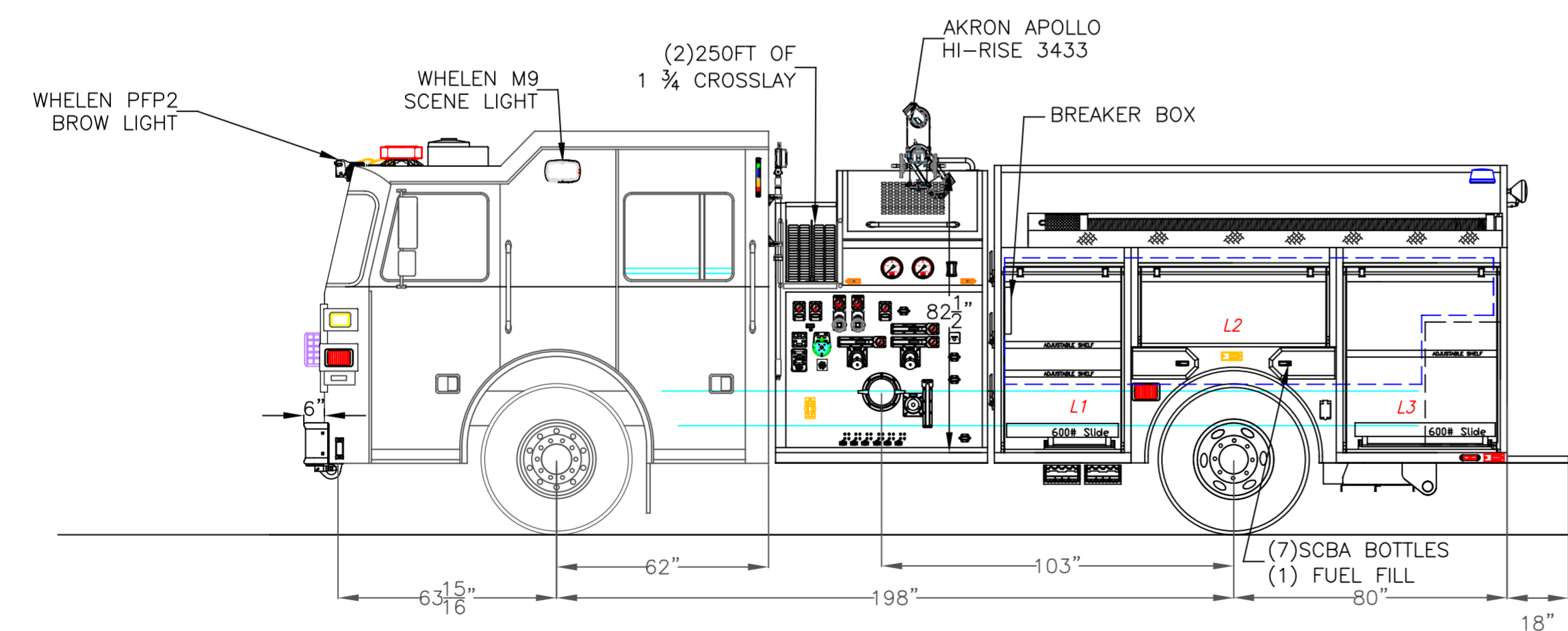


Left Side Compartmentation				
Compt	Doors	Opening Dimensions	Inside Dimensions	Volume
L1	Roll Up	33X49	40x59x24.25	33.1 CU FT
L2	Roll Up	53X18	60x28x10.25	23.6 CU FT
L3	Roll Up	43X49	50x59x24.25	41.4 CU FT
Right Side Compartmentation				
Compt	Doors	Opening Dimensions	Inside Dimensions	Volume
R1	Roll Up	33X49	40x59x10.25x24.25	23.7 CU FT
R2	Roll Up	53X18	60x28x10.25	10 CU FT
R3	Roll Up	43X49	50x59x10.25x24.25	29.7 CU FT
Rear Compartmentation				
Compt	Doors	Opening Dimensions	Inside Dimensions	Volume
A1	Roll Up	41x26	48x36x22.25	22.5 CU FT
Total Volume				184 CU Ft

HALE QMAX 1500GPM PUMP
750 GALLON WATER TANK



DIMENSIONS SHOWN ON THIS DRAWING ARE APPROXIMATE AND ARE SUBJECT TO MINOR DEVIATIONS DURING CONSTRUCTION. IN THE EVENT OF A DISCREPANCY BETWEEN THE SUTPHEN SPECIFICATIONS AND DRAWING, THE SUTPHEN SPECIFICATIONS SHALL PREVAIL. DRAWING IS FOR REFERENCE ONLY. SOME ITEMS PROPOSED MAY NOT BE SHOWN OR NOTED.	CUSTOMER APPROVAL						DRAWN BY: S. DORFMAN		SUTPHEN EAST 55 INNOVATION DRIVE LAKE ARIEL, PA 1-844-776-2889		
	NAME:						DATE: 02/21/18		NAHANT FIRE DEPARTMENT NAHANT, MA		
	TITLE:						MFG. FACILITY: SUTPHEN EAST LAKE ARIEL, PA		PS-05 STAINLESS PUMPER		
DATE:				A		CHANGES FROM PRE-CON		SED		4/13/18	
				REV.		DESCRIPTION		BY		DATE	
THIS PRINT IS PROVIDED ON A RESTRICTED BASIS AND IS NOT TO BE USED IN ANY WAY DETRIMENTAL TO THE INTEREST OF SUTPHEN CORPORATION.											
								DWG. NO.:		HS-6252	