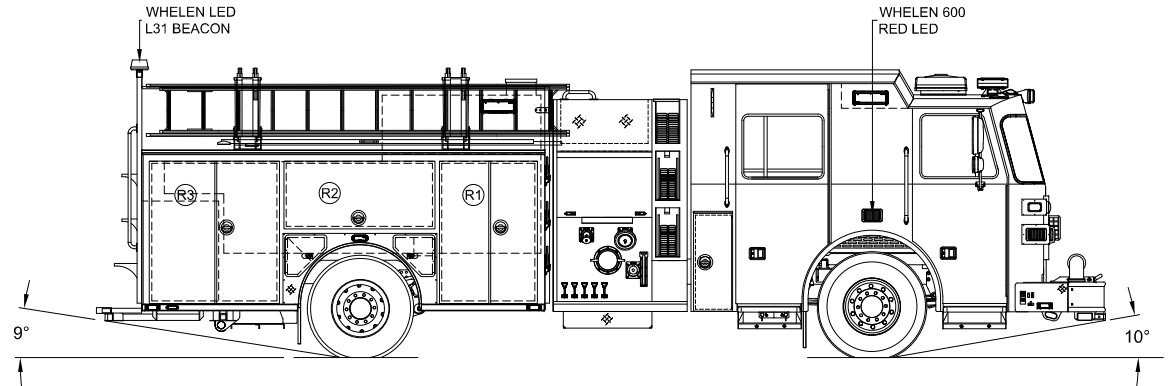


HOSEBED
BBOARD STOR
250' OF 1.75"
1200' OF 5"
250' OF 3"

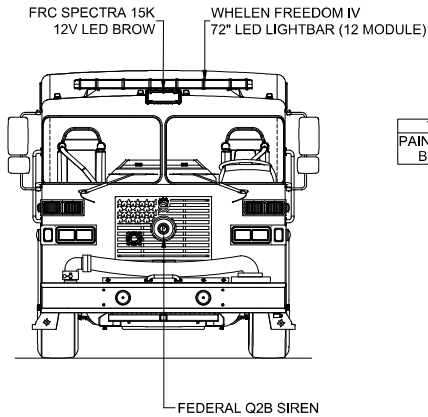
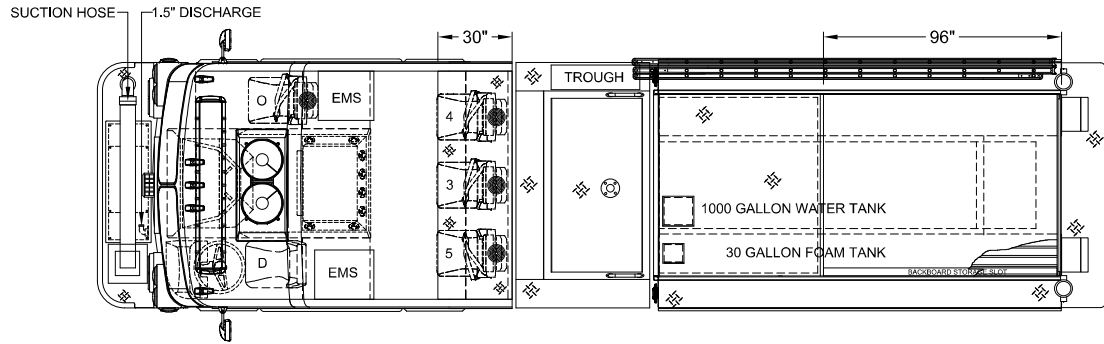
LADDER RACK
24' 2-SECT
14' ROOF
10' FOLDING



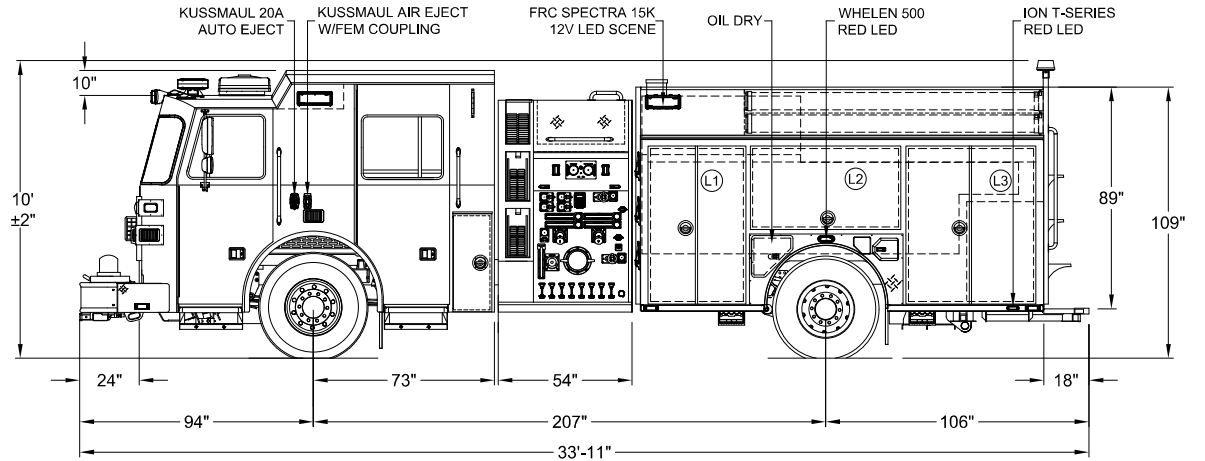
LEFT SIDE COMPARTMENTS				
COMPT	DOORS	OPENING DIMENSIONS	INSIDE DIMENSIONS	VOLUME
L1	DOUBLE	35.5" w X 58.4" h	43.1" w X 66" h X 27.3" d	40.8 CU. FT. (10" h X 10.5" d UPPER)
L2	LIFT-UP	55.0" w X 31.9" h	61.6" w X 36.8" h X 27.3" d	29.8 CU. FT. (10" h X 10.5" d UPPER)
L3	DOUBLE	48.5" w X 58.4" h	53.4" w X 66" h X 27.3" d	50.5 CU. FT. (10" h X 10.5" d UPPER)

RIGHT SIDE COMPARTMENTS				
COMPT	DOORS	OPENING DIMENSIONS	INSIDE DIMENSIONS	VOLUME
R1	DOUBLE	35.5" w X 52.4" h	43.1" w X 60" h X 27.3" d	39.2 CU. FT. (4" h X 10.5" d UPPER)
R2	LIFT-UP	55.0" w X 25.9" h	61.6" w X 30.8" h X 27.3" d	27.6 CU. FT. (4" h X 10.5" d UPPER)
R3	DOUBLE	48.5" w X 52.4" h	53.4" w X 60" h X 27.3" d	48.5 CU. FT. (4" h X 10.5" d UPPER)

REAR STEP COMPARTMENT				
COMPT	DOORS	OPENING DIMENSIONS	INSIDE DIMENSIONS	VOLUME
A1	ROLL-UP	23.5" w X 32.8" h	40" w X 40" h X 31" d	28.7 CU. FT.
TOTAL:				265.0 CU.FT.



TWO TONE CAB
PAINT BREAK OPTION #1
BLACK OVER RED



DIMENSIONS SHOWN ON THIS DRAWING ARE APPROXIMATE AND ARE SUBJECT TO MINOR DEVIATIONS DURING CONSTRUCTION.

IN THE EVENT OF A DISCREPANCY BETWEEN THE SUTPHEN SPECIFICATIONS AND DRAWING, THE SUTPHEN SPECIFICATIONS SHALL PREVAIL.

DRAWING IS FOR REFERENCE ONLY, SOME ITEMS PROPOSED MAY NOT BE SHOWN OR NOTED.

CUSTOMER APPROVAL

NAME: _____

TITLE: _____

DATE: _____

L REFERENCE SHOP ORDER REVISION EMAIL

K REFERENCE SHOP ORDER REVISION EMAIL

J REFERENCE SHOP ORDER REVISION EMAIL

I REFERENCE SHOP ORDER REVISION EMAIL

REV.

DESCRIPTION

THIS PRINT IS PROVIDED ON A RESTRICTED BASIS AND IS NOT TO BE USED IN ANY WAY DETRIMENTAL TO THE INTEREST OF SUTPHEN CORPORATION.

ML 07/09/25

ML 07/09/25

ML 06/30/25

ML 06/13/25

BY

DATE

MFG. FACILITY:

URBANA

DWG. NO.:

HS-7570

DATE: 08/30/21
DRAWN BY: M.LUSCHER

SUTPHEN

RIDGEVILLE TOWNSHIP FIRE DEPARTMENT
RIDGEVILLE CORNERS, OH

CUSTOM PUMPER - PA-05