

| Left Side Compartmentation  |                    |                   |
|-----------------------------|--------------------|-------------------|
| Comp't                      | Opening Dimensions | Inside Dimensions |
| L1                          | Roll Up 48x55      | 55x65x11.25/24.25 |
| L2                          | Roll Up 49x15      | 56x25x11.25       |
| L3                          | Roll Up 49x15      | 56x25x11.25       |
| L4                          | Roll Up 51x55      | 58x65x11.25/24.25 |
| Right Side Compartmentation |                    |                   |
| Comp't                      | Opening Dimensions | Inside Dimensions |
| R1                          | Roll Up 48x30      | 55x40x24.25       |
| R2                          | Roll Up 51x30      | 58x40x24.25       |
| Volume                      |                    | 27.8 CU FT        |
| Total Volume                |                    | 28.3 CU FT        |

CHUTE STORAGE

10" 6" HARD SUCTION

FENDER STORAGE

LFF: DOUBLE SCBA

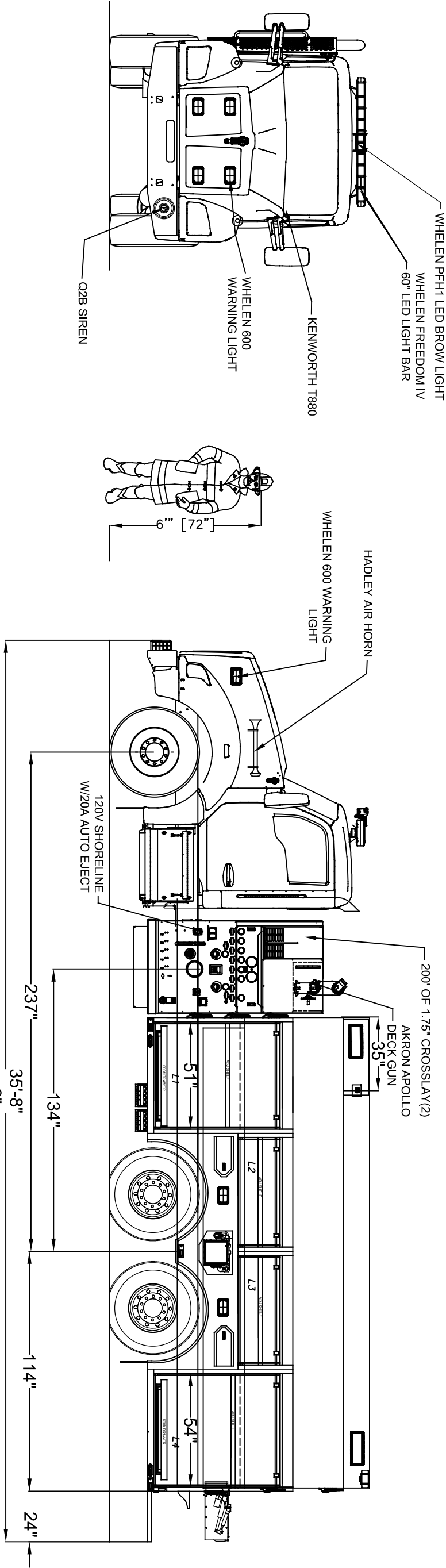
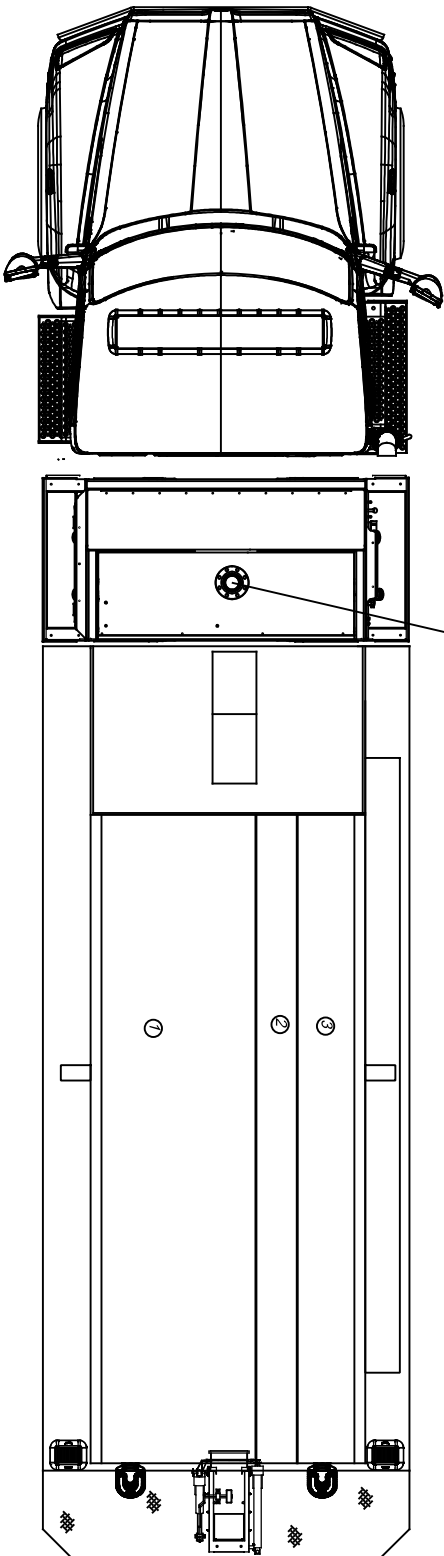
LRF: DOUBLE SCBA

COMBO

RFF: DOUBLE SCBA

RRF: DOUBLE SCBA

|                |              |
|----------------|--------------|
| HALE QMAX 1500 | Total Volume |
| SINGLE STAGE   | 153.1 CU FT  |
| 3500 GAL WATER |              |



|   |  |  |  |  |
|---|--|--|--|--|
| DIMENSIONS SHOWN ON THIS DRAWING ARE APPROXIMATE AND ARE SUBJECT TO MINOR DEVIATIONS DURING CONSTRUCTION.               | CUSTOMER APPROVAL                          |  |  |  |
|   | NAME: _____                                |  |  |  |
|   | TITLE: _____                               |  |  |  |
|   | DATE: _____                                |  |  |  |
| IN THE EVENT OF A DISCREPANCY BETWEEN THE SUTPHEN SPECIFICATIONS AND DRAWING, THE SUTPHEN SPECIFICATIONS SHALL PREVAIL. | REV. A                                     |  |  |  |
|   | CHANGES FROM PRE-CON                       |  |  |  |
|   | DESCRIPTION                                |  |  |  |
|   | BY DATE                                    |  |  |  |
| DRAWING IS FOR REFERENCE ONLY. SOME ITEMS PROPOSED MAY NOT BE SHOWN OR NOTED.   | MFG. FACILITY: SUTPHEN EAST LAKE ARIEL, PA |  |  |  |
|   | DATE: 10/4/22                              |  |  |  |
|   | WAKEMAN FIRE DEPARTMENT WAKEMAN, OH        |  |  |  |
|   | COMMERCIAL TANKER, WEISIDE - SWT-04C       |  |  |  |
| DWG. NO.: HS-7867   |  |  |  |  |

THIS PRINT IS PROVIDED ON A RESTRICTED BASIS AND IS NOT TO BE USED IN ANY WAY DETRIMENTAL TO THE INTEREST OF SUTPHEN CORPORATION.

SUTPHEN

WAKEMAN FIRE DEPARTMENT WAKEMAN, OH