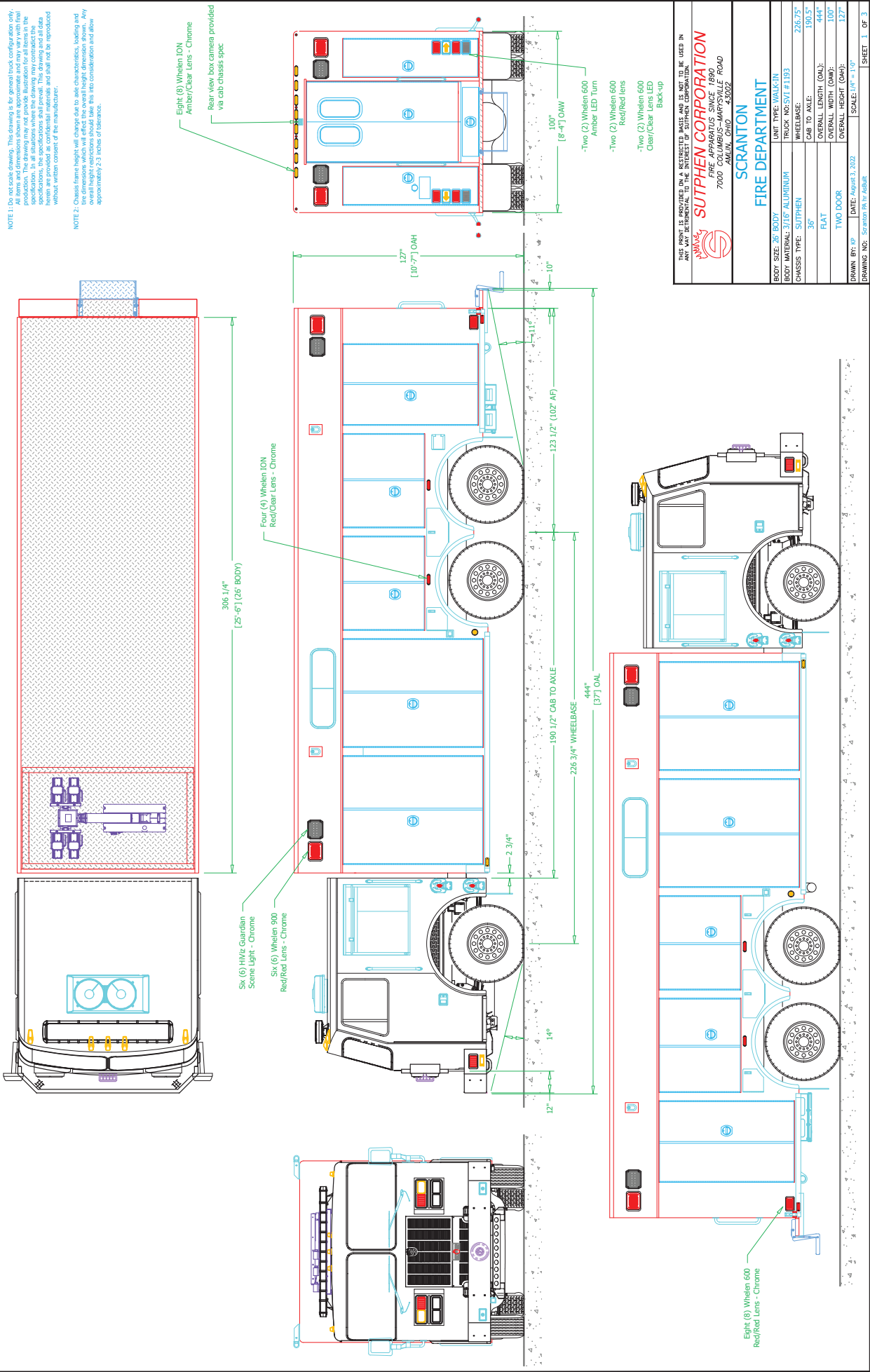


REV	DESCRIPTION	DATE	BY

REVISIONS

NOTE 1: Do not scale drawing. This drawing is for general truck configuration only. All items and dimensions shown are approximate and may vary with final manufacturer specifications. In all analyses where the drawing may contradict the specifications, the specifications shall prevail. This drawing and all data contained herein are for informational purposes only and shall not be reproduced without written consent of the manufacturer.

NOTE 2: Chassis frame height will change due to axle characteristics, loading and tire dimensions which will affect the overall height dimension shown. Any dimensions shown are approximate and subject to the manufacturer's design and tolerance. Approximate 2-3 inches of tolerance.



THIS PRINT IS PROVIDED ON A RESTRICTED BASIS AND IS NOT TO BE USED IN ANY MANNER THAT COULD BE CONSIDERED AS A CONTRACT.

SUTPHEN CORPORATION
FIRE APPARATUS SINCE 1896
7000 AMUN, OHIO 43002

SCRANTON FIRE DEPARTMENT

UNIT TYPE: WALK-IN
TRUCK NO: SVT # 193
WHEELBASE: 226.75"
CAB TO AXLE: 190.5"
OVERALL LENGTH (OAL): 444"
OVERALL WIDTH (OAW): 100"
OVERALL HEIGHT (OAH): 127"
TWO DOOR
DATE: March 3, 2022
SCALE: 1/4" = 1'-0"

DRAWN BY: [Redacted] SHEET 1 OF 3